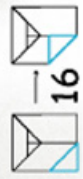




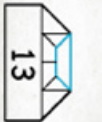
BY FOLDING THE PAGE.



FOLDS #7 AND #8 COLLAPSE DOWN AND OUT.



A LETTER!



ENVELOPE

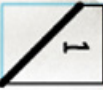
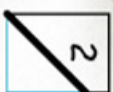
YOU TO CAN PUSH THE

AND FOLLOWING STEPS 1-18.

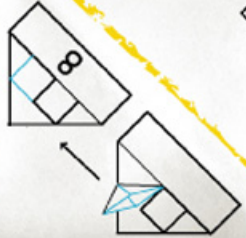
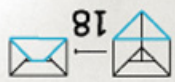
FOLD #4 CAN BE TOUGH AT FIRST. THINK OF IT AS IF THE SIDES ARE COLLAPSING IN ON THEMSELVES.



WRITE ON.



FROM:



I'VE GOT MAIL!

