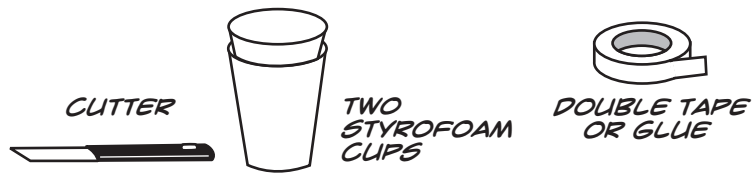


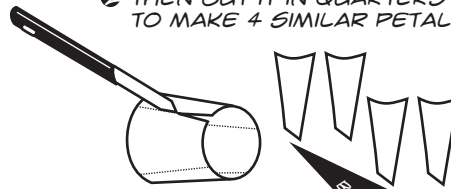
# CUP HELICOPTER



1 REMOVE THE BASE OF ONE CUP.



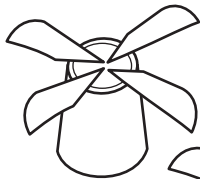
2 THEN CUT IT IN QUARTERS TO MAKE 4 SIMILAR PETALS.



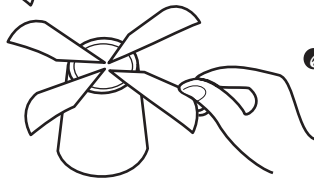
3 CUT RIM OF OTHER CUP. ITS BASE SHOULD BE FLAT.



4 STICK DOUBLE TAPE ON ITS BASE AND FIX FOUR PETALS.



5 TWIST PETALS TO MAKE BLADES.



6 DECORATE AND DROP THE CUP FROM A HEIGHT. THE CUP HELICOPTER WILL COME DOWN SPINNING.

