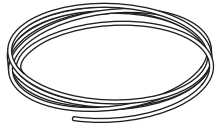
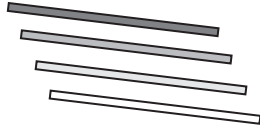


# SPIRAL SNAKE

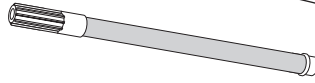
## YOU NEED



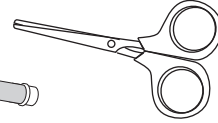
1- mm  
thick wire



Different  
colored straws

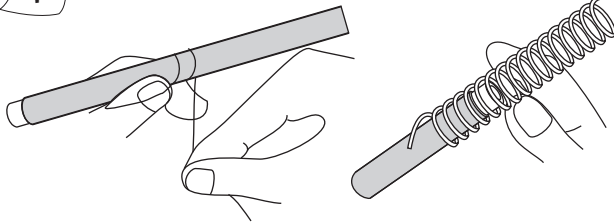


Sketch Pen



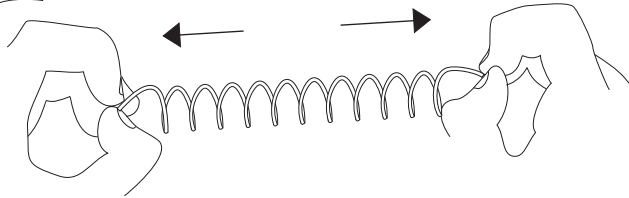
Scissors

1



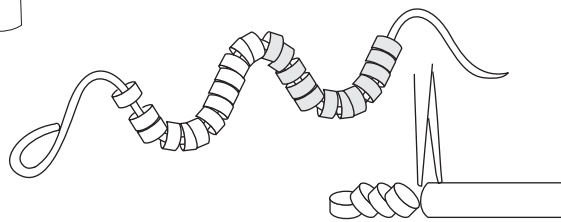
Wind 40-cm long (1-mm thick) wire on a sketch pen.  
Remove the spring.

2



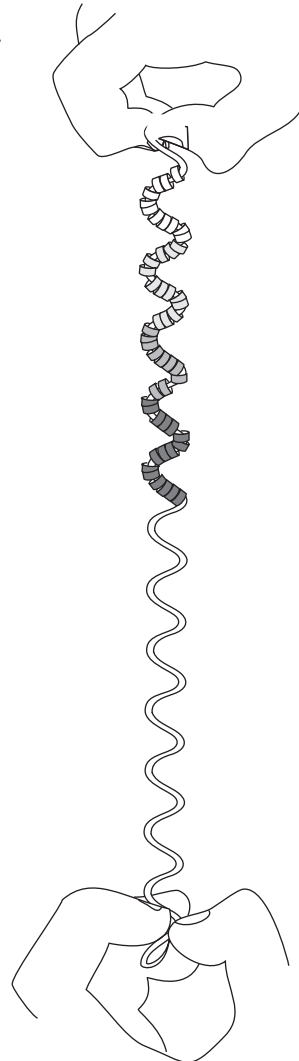
Pull spring from both ends to make a long spiral.

3



Weave color straw pieces - first dark and then light colors.  
Loop both ends.

4



On holding vertically the straw pieces  
will magically spiral down like a  
slithery snake!