
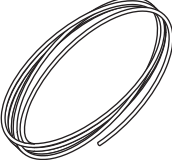
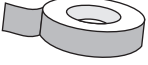

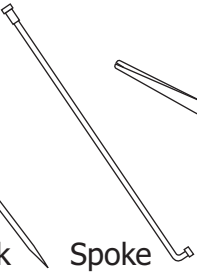
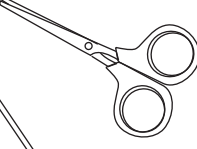
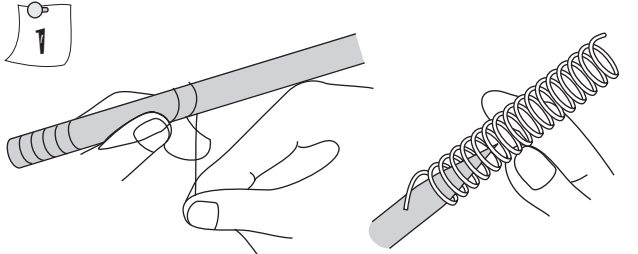


WOODPECKER

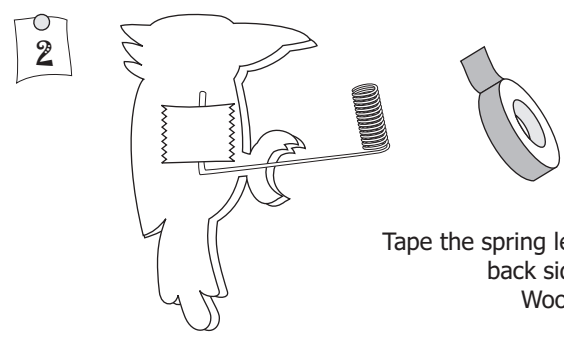
YOU NEED

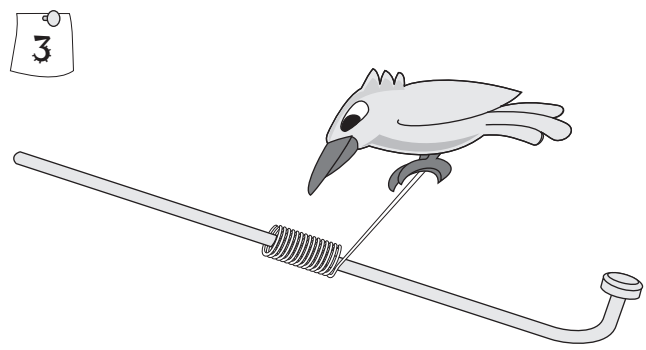
Thick card Woodpecker 1- mm thick wire Cello tape Toothpick Spoke Scissors



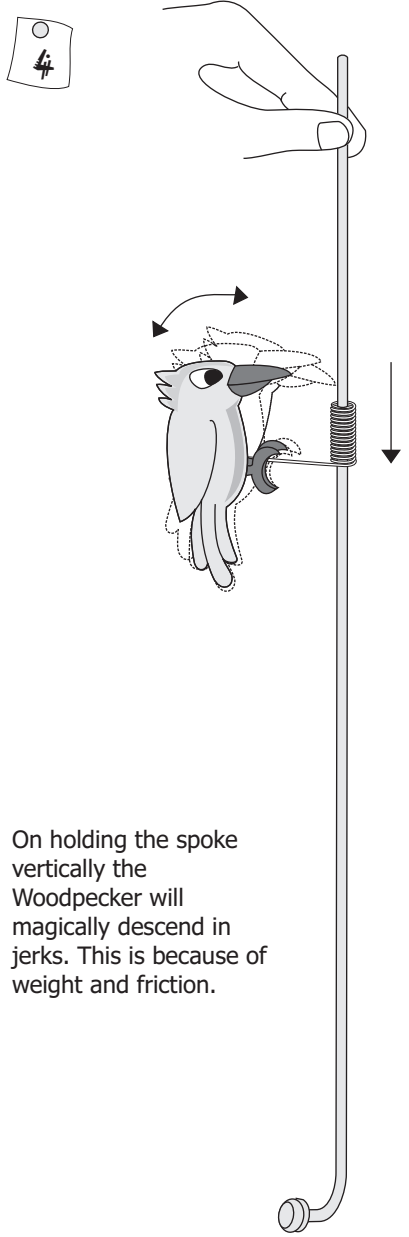
Wind 10-cm long wire on a toothpick. Remove the spring.



Tape the spring leg to the back side of the Woodpecker.



Place the spring on a slightly loose wire (cycle spoke).



On holding the spoke vertically the Woodpecker will magically descend in jerks. This is because of weight and friction.